

M38e



The **NEW M38e** from Capsa Healthcare is an evolution of the most proven point-of-care computing cart in healthcare. With updated features that provide superior ergonomics, enhanced ease-of-use, and expanded storage flexibility, the M38e maximizes clinical efficiency and elevates the performance of your health IT program.

- 18% smaller profile glides through tight care settings
- 10% larger work area with additional 100 square inch expandable surface feature
- 25% increase in battery runtime for improved uptime performance
- Up to 24% larger CPU storage area affords tech organization



Comfortable two-position handles simplify mobility



Intuitive locking and security system



Integrated storage pods and protective document cover



Please contact us at:
sales@stratsourcing.com
614.760.3990

Optional Accessories



Access Pack for med cups, tape and alcohol wipes and/or scanner holder



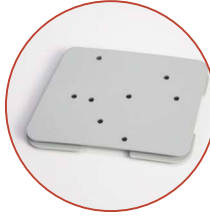
Infection Control Wipes Bracket



Printer Shelves



Forked Scanner Holder



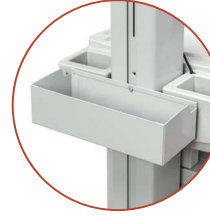
Barcode Scanner Shelves and Scanner Holder Options



Wire Basket



Waste Container



Zebra Printer Holder

Check with your Capsa Healthcare regional sales manager about these and more accessories specific to your chosen point-of-care solution.

Bin Configurations



FG9M38-11



FG9M38-33



FG9M38-12



FG9M38-23



FG9M38-22



FG9M38-DD



FG9M38-13



FG9M38-QQ



Pharmacy Robot Envelope Drawer

Non-locking supply bins also available

Drawer Options

Flexibility to configure workstation with storage drawers in 3" or 6" depths



3" Drawer
Electronic lock or non-locking



2-3" Drawers
Electronic lock or non-locking



6" Drawer
Electronic lock

Model Options



M38e
Document Model



M38e
XP Model



M38e
RX Model



M38e
Laptop Model

General Specifications:

- Top Work Surface Size: 19.6" w x 10.5" d
- Casters: Choose from 4" or 5" standard or directional casters
- Choose from manual or electronic height adjustment
- Adjustable height, tilt/swivel monitor mount and keyboard tray options
- Enhanced lighting features to assist with navigating and working in darkened areas
- Intuitive locking and security system